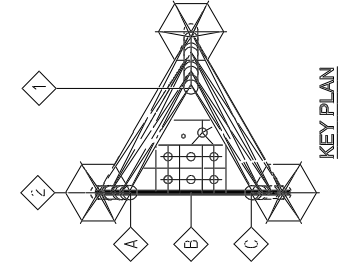
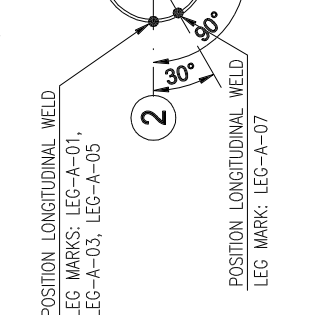
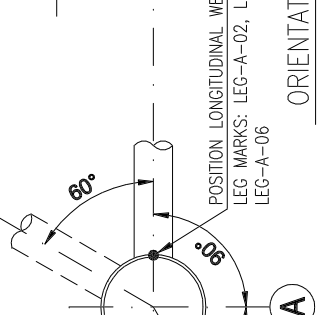
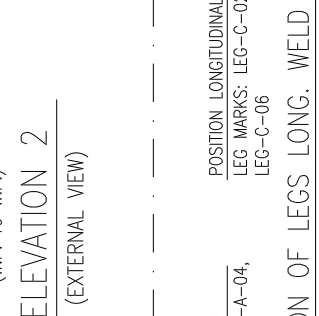
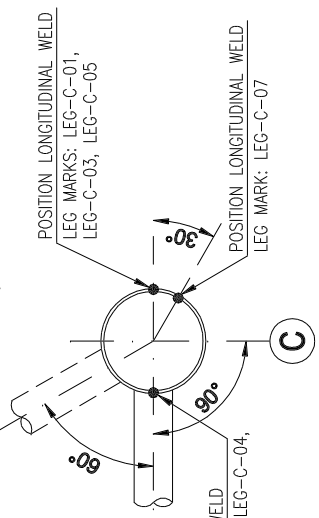
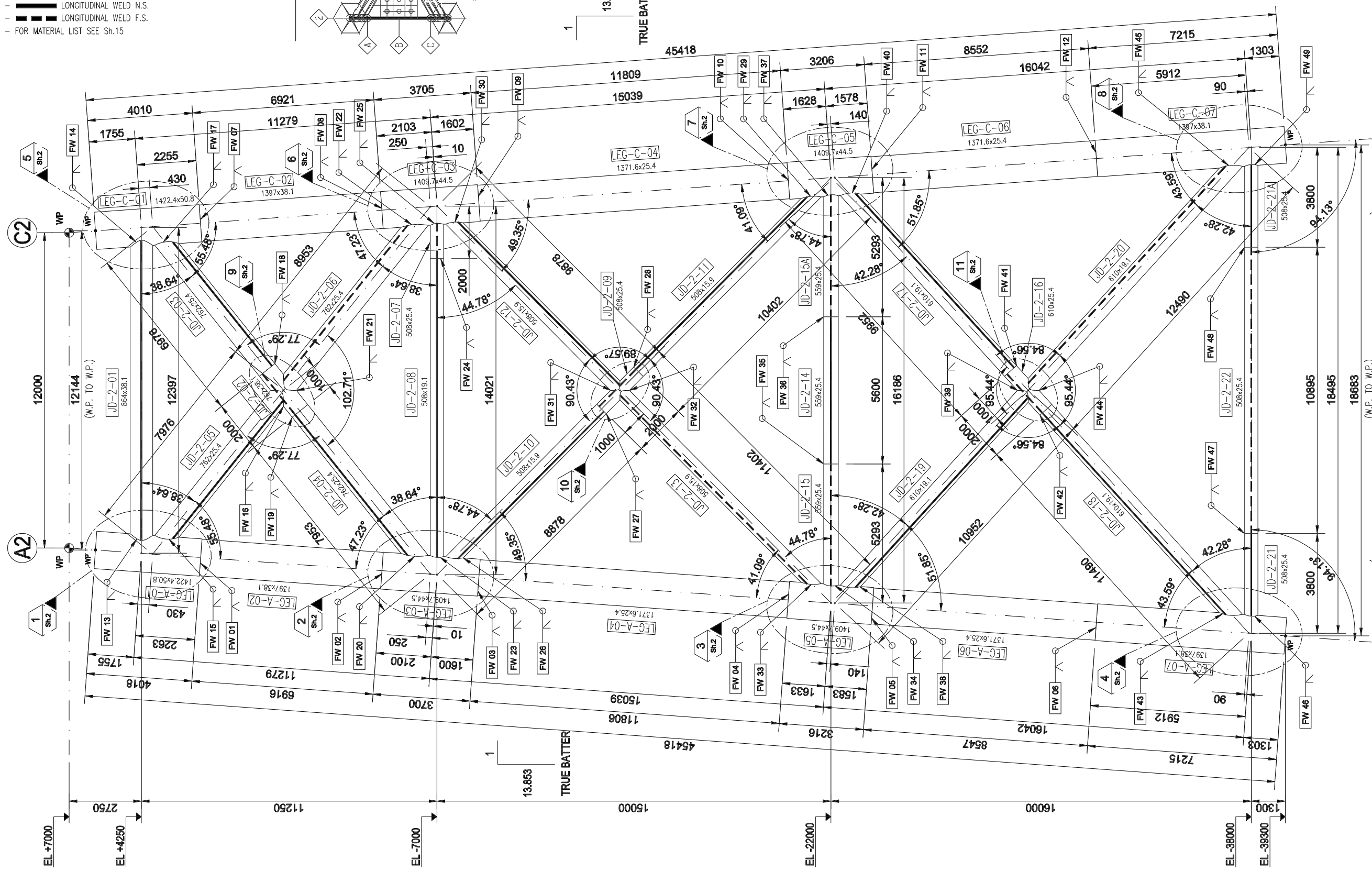


NOTES

- 1 - ALL DIMENSIONS ARE IN MILLIMETRES U.N.O.
- 2 - ALL ELEVATIONS ARE REFERRED TO MEAN LOW WATER (M.L.W.) ± 0.00 m.
- 3 - THE SYMBOL FWxx INDICATES WELDS TO BE PERFORMED IN FIELD
- 4 - WELD NUMBER: FW01 - FW49
- 5 - LONGITUDINAL WELD N.S.
- 6 - LONGITUDINAL WELD F.S.
- 7 - FOR MATERIAL LIST SEE Sh.15



13.853
TRUE BATTER



This drawing and the design it covers are the property of PETROMAR. They are merely loaned and on the borrower's express agreement that they will not be reproduced, copied, loaned, exhibited, nor used except in the limited way and private use permitted by any written consent given by the lender to the borrower.

F33099-PTM-100-STR-ASD-1200	01	JACKET- ASSEMBLY
AO-042-SC-070-039010	02	JACKET- ELEVATION 2
REF. DOC. N°	REV	REFERENCE DOCUMENT TITLE

1	15-DEC-08	APPROVED FOR CONSTRUCTION
Rev.	Date DD-MM-YY	Revision Description

ICA	NAR	MMF	ADV/DMOI
Originator	Checker	Approval	Project
View	View	View	View

Scale: N.T.S.

Original Paper size: A3

Plotter: A1, A3

Company: TOTAL E&P ANGOLA ANGOLA - BLOCK 17

Project name: BLOCK 2 SINGLE CENTRAL PLATFORM (SCP)

Company's contract N°: N/A Product: N/A Type of document: DRAWING

Company's document identification: -

Contractors: Eni Saipem sa. Petromar

Document title: JACKET PRIMARY STEEL SUBASSEMBLY - SJ1 ELEVATION 2

Job N°	Origin	Unit	Discipline	Doc. Type	Seq. Num.	Sheet	Rev.
F33099	PTM	100	STR	SAD	1100	1-15	1